

Our cloud governance solution that will be deployed and managed by DC2HS to allow for an improved end user experience for Mission Owner administrators.

Our solution provides an easier means of managing cloud accounts, policies and recourse baselines, cost optimization, budget tracking and enforcements, and continuous compliance for better efficiency and security.

To learn more and to discuss how Cloud CITI can be a solution for you, please contact the Cloud CITI team at

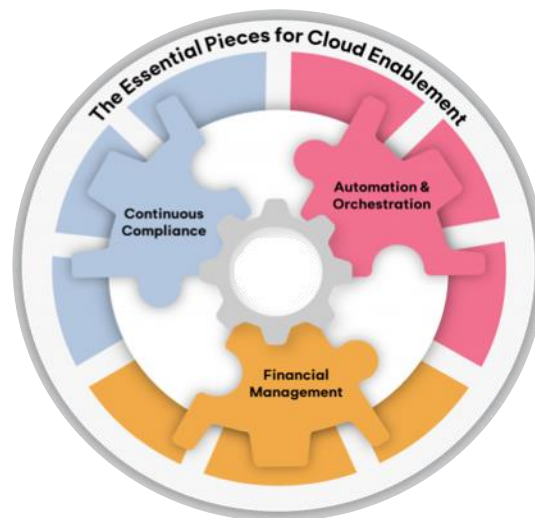
CloudCITI@us.navy.mil

## Summary

The Cloud Capability Integrations Technical Initiative (CITI) project aims to provide cloud native services that increase our Mission Owner's ability to deliver secure applications/services at a higher velocity.

## Solution Highlights

- Budget Enforcement - Align your budget to your organizational structure and projects. Prevent cost overruns with unique enforcement actions and identify savings opportunities.
- Continuous Compliance - Automate compliance with robust, inheritable access policies. Take the manual effort out of ensuring adherence and restricting use of non-compliant services.
- Financial Management – Spending reports are available to provide greater financial management of costs.



## Benefits

- Built-in integrations with your existing tech stack
- Automations created in familiar languages
- Organization-wide visibility across your cloud projects
- Always current cost and compliance reporting

**Our software development lifecycle support** is a code repository, software deployment, and software collaboration tool.

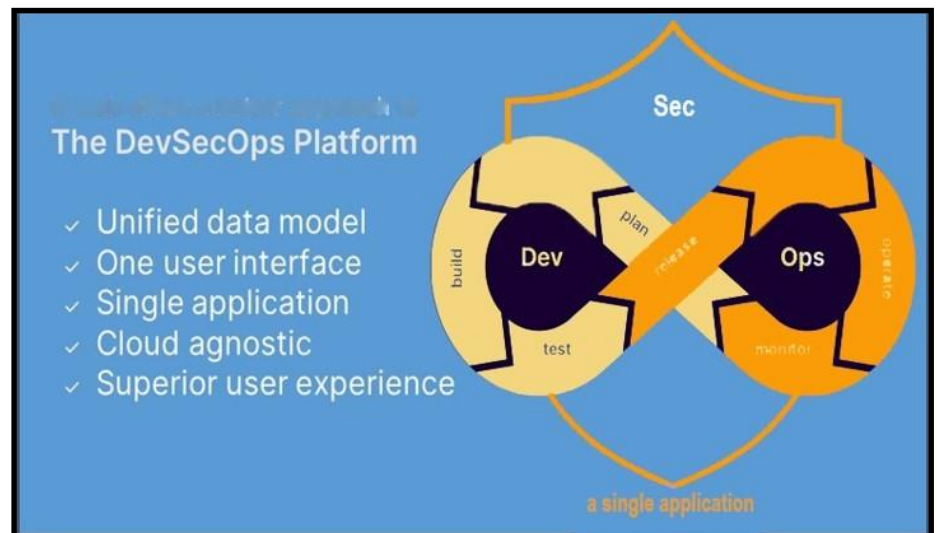
Rate includes runners, licensing, hosting, and costs related to maintaining an ATO.

To learn more and to discuss how Cloud CITI can be a solution for you, please contact the Cloud CITI team at

CloudCITI@us.navy.mil

### Summary

The Cloud Capability Integrations Technical Initiative (CITI) project aims to provide cloud native services that increase our Mission Owner's ability to deliver secure applications/services at a higher velocity. **Our software development lifecycle support brings the entire software development lifecycle into a single application, empowering teams to rapidly move from idea to customer value.**



### Benefits

- **Security is built in, not bolted on**
  - Security capabilities such as SAST, secret detection, and container scanning are integrated end-to-end.
- **Compliance and precise policy management**
  - Comprehensive governance solution allowing for separation of duties between teams. Policy editor allows customized approval rules tailored to each organization's compliance requirements, reducing risk.
- **Security automation**
  - Advanced automation tools enable velocity with guardrails, ensuring code is automatically scanned for vulnerabilities.



## DC2HS Remote Access Solution

provides a cloud native remote access solution along with database management tools .

**The DC2HS access solution** is a fully managed non-persistent desktop with persistent storage that can replace the Virtual Desktop Infrastructure (VDI) that we have deployed through Citrix today.

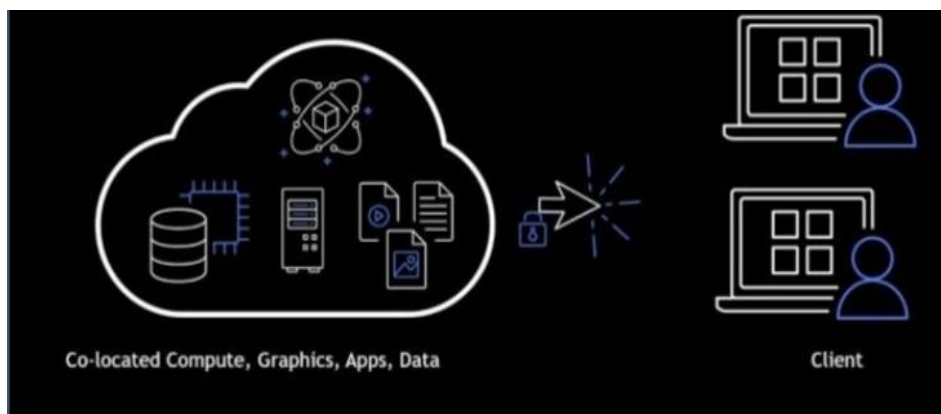
To learn more and to discuss how Cloud CITI can be a solution for you, please contact the Cloud CITI team at

CloudCITI@us.navy.mil

## Summary

The Cloud Capability Integrations Technical Initiative (CITI) project aims to provide cloud native services that increase our Mission Owner's ability to deliver secure applications/services at a higher velocity.

*The DC2HS Remote Access solution will be included as a service available to Mission Owners that subscribe to DC2HS Shared Services*



## Top Features:

**Stream on any device**, Our remote access solution helps you to stream on any device of your choice. The application can also be streamed through the a client (only for supported versions of Windows).

**Fluid and responsive user experience**, The remote access solution runs on AWS and is unavailable on your local devices. This makes the application run with great performance. The applications run on virtual machines suitable for their use cases. The protocol adjusts to users' network conditions enabling a fluid user experience.

**Cloud Management Services** include active container scanning, container admission criteria enforcement and much more

This can be used to secure hosts, containers, and serverless functionality.

Rate includes licensing, hosting and costs related to maintaining an ATO.

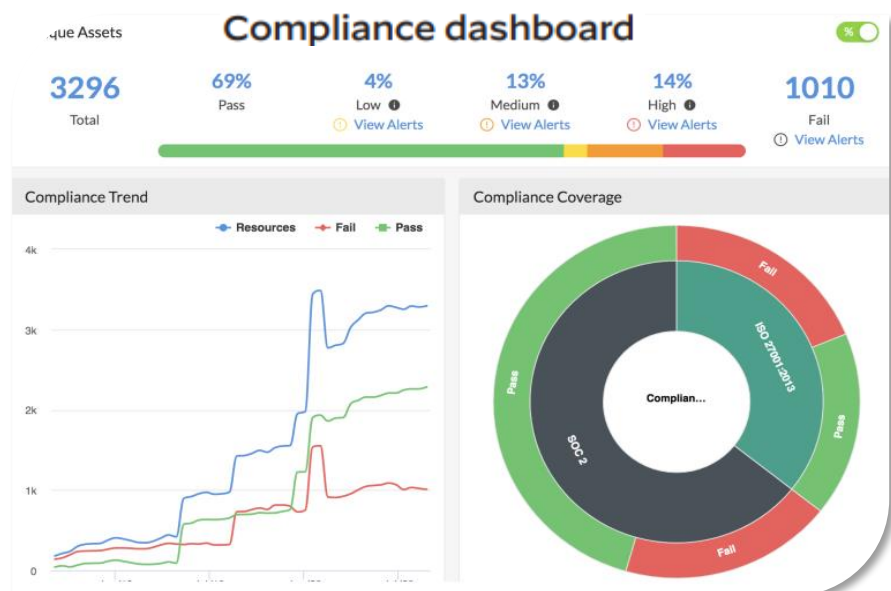
To learn more and to discuss how Cloud CITI can be a solution for you, please contact the Cloud CITI team at

CloudCITI@us.navy.mil

## Summary

The Cloud Capability Integrations Technical Initiative (CITI) project aims to provide cloud native services that increase our Mission Owner's ability to deliver secure applications/services at a higher velocity.

We use a comprehensive cloud-native application protection platform with the industry's broadest security and compliance coverage—for applications, data, and the entire cloud-native technology stack—throughout the development lifecycle and across hybrid and multicloud environments. The integrated approach eliminates the security constraints around cloud-native architectures—rather than masking them—and breaks down security operational silos across the entire application lifecycle, allowing DevSecOps adoption and enhanced responsiveness to the changing security needs of cloud-native architectures.



## Benefits

- Active Container Scanning
- Vulnerability Management
- Container Compliance
- CICA security



# CLOUD CITI – Mission Owner Services for AWS Environments

Cloud Capability Integrations Technical Initiative



## The Cloud Capability Integrations Technical Initiative

(CITI) project aims to provide cloud native services that increase our Mission Owner's ability to deliver secure applications/services at a higher velocity.

To learn more and to discuss how Cloud CITI can be a solution for you, please contact the Cloud CITI team at

CloudCITI@us.navy.mil

## Summary

DC2HS has developed capabilities that can be applied to Mission Owner environments in AWS. These capabilities reduce resource load, and human error for STIG compliance, ATO requirements and environment management:

### 1. Automated image STIGing via scripts

Cloud CITI team deploys method for deploying hardened images to autoscaling groups and/or CFTs via continuous application of STIGs to base AMIs. Currently supports Amazon Linux 2 and RHEL 7 but we can expand this capability to RHEL 8 if requested.

### 2. Password rotation (EC2 and RDS)

Cloud CITI team deploys script which applies a new password to EC2 and RDS instances every 59 days and puts the new password in AWS secrets manager. Passwords can include ssh keys for linux-based instances.

### 3. SSL certificate expiration

Cloud CITI team deploys script which checks for SSL/TLS certificates with expiry dates upcoming (30 days). This script requires certificates to be stored in certificate manager.

### 4. IP list generation for ACAS

Cloud CITI team deploys script which generates a list of all EC2 instance IPs in the AWS account. Script sends them via email to specified recipients using AWS SNS topics. This offering is aimed at systems which use autoscaling and have changing system IPs.

### 5. MDE health check

Cloud CITI team deploys script which checks each EC2 instance for MDE health status as "healthy". This output does not count as proof of MDE but it will monitor instances for unhealthy MDE.

### 6. License expiration check

Cloud CITI team deploys script which monitors for when licenses expire. Script sends emails 100 days before expire date and sends emails daily until license is updated.

These offerings are separate from the Cloud CITI offerings listed in the service catalog. Each offering will require professional service hours for initial deployment. Each deployment would then be maintained by Mission Owners. However, additional support is available via professional service hours. If you are interested in any of these capabilities, please reach out to CloudCITI@us.navy.mil